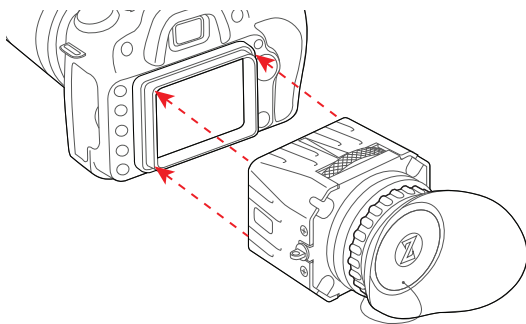
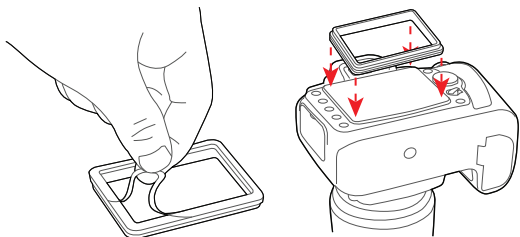


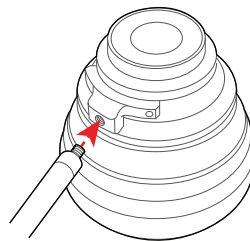
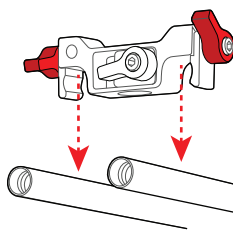


# Using the 1/4"-20 Locking Lens Support with Zeiss CP2 Lenses

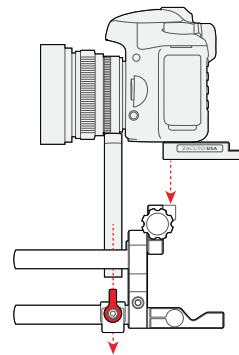
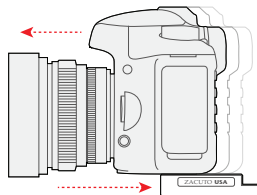
- 1** Standard Z-Finder frame is not compatible with this combination, use adhesive frame. Peel paper film off, center on LCD and apply pressure for 24 hrs until cured



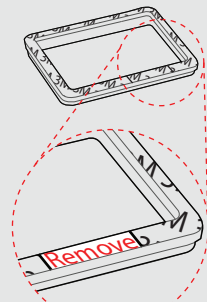
- 2** Attach Locking Lens Support to rods and screw rod into 1/4"-20 hole on lens



Slide camera all the way forward and lock on baseplate



If using a Canon T2i you must modify the adhesive backing to protect the proximity sensors



Remove the pre-cut piece of film and rub adhesive off with finger before applying to LCD

